

For Immediate Release
May 1, 2024

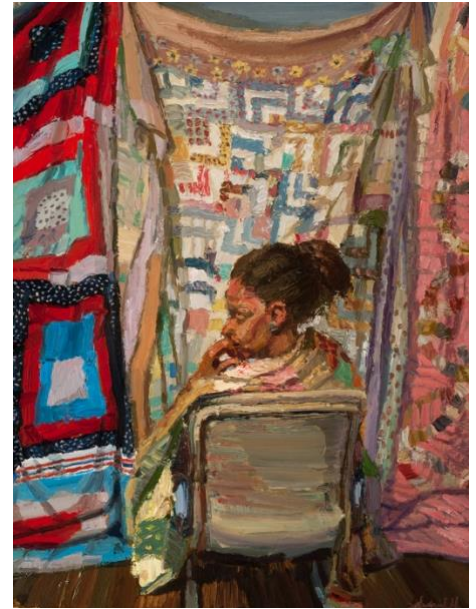
SUSQUEHANNA ART MUSEUM

AT THE MARTY AND TOM PHILIPS FAMILY ART CENTER

SURPRISING COLLECTION SPARKS INSPIRATION IN HARRISBURG

Harrisburg, PA- Susquehanna Art Museum is pleased to host *Memories & Inspiration: The Kerry and C. Betty Davis Collection of African American Art*, an exhibition that celebrates an ordinary couple's passion for art. Over the course of 35 years, the Davis's built a collection of vivid artworks that are both resonant and remarkably personal.

Kerry, a retired mailman, and Betty, a former television news producer, gladly gave up many ordinary comforts so they could live with extraordinary works of art as their principal luxuries. Their collection includes works by Romare Bearden, Beverly Buchanan, Elizabeth Catlett, Ernest T. Crichlow, Sam Gilliam, Lois Mailou Jones, Jacob Lawrence, Gordon Parks, Alma Thomas, and Charles White. Kerry and Betty do not search exclusively for well-known artists, but rather focus on the more meaningful task of gathering and preserving a range of artistic approaches to the Black image, in order to console the psyche and contribute to a more authentic articulation of the self.



Sedrick Huckaby, *She Wore Her Family's Quilt*, 2015, oil on canvas. Photograph by Gregory Staley. © Sedrick Huckaby.

The result is an eclectic gathering of pieces crossing different mediums, subjects, and styles by a group of artists of the African Diaspora who—in terms of training, experience, and expression—are strikingly diverse but unified in their use of cultural and historical narratives. *Memories & Inspiration* brings together an awe-inspiring selection of works, but it is their personal resonance—their connection to the Davises' hopes, passions, and everyday lives—that gives the collection its unique power.

Memories & Inspiration: The Kerry and C. Betty Davis Collection of African American Art is organized and toured by International Arts & Artists, Washington, DC, and will on view in the Lehr Gallery June 8 – August 18, 2024. Thank you to Lehr Gallery Presenting Sponsor UPMC, Lehr Gallery Season Sponsor Anne M. & Philip H. Glatfelter III Foundation, and Silver Sponsors Highmark and Penn State Health.

Susquehanna Art Museum is located at 1401 N. 3rd Street, Harrisburg, PA 17102.

Hours: Wednesday 10am – 7pm, Thursday – Saturday 10am – 5pm, Sunday 12 – 5pm.

Free parking is available to visitors in the lot behind the Museum at Calder and James Streets.

www.SusquehannaArtMuseum.org (717) 233-8668

Facebook & Instagram: Susquehanna Art Museum **X:** @SusquehannaArt

Contact: Bonnie Mae Carrow, Director of Exhibitions, BCarrow@SusquehannaArtMuseum.org

International Arts & Artists: 202.338.0680, Info@ArtsandArtists.org



Anne M. & Philip H.
Glatfelter III Foundation

