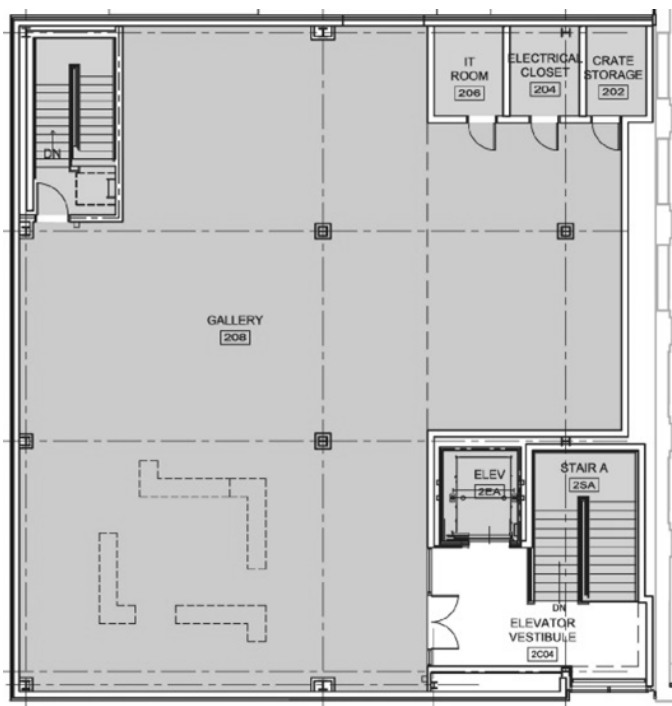


Susquehanna Art Museum Exhibition Proposal Policy- Gallery Specs

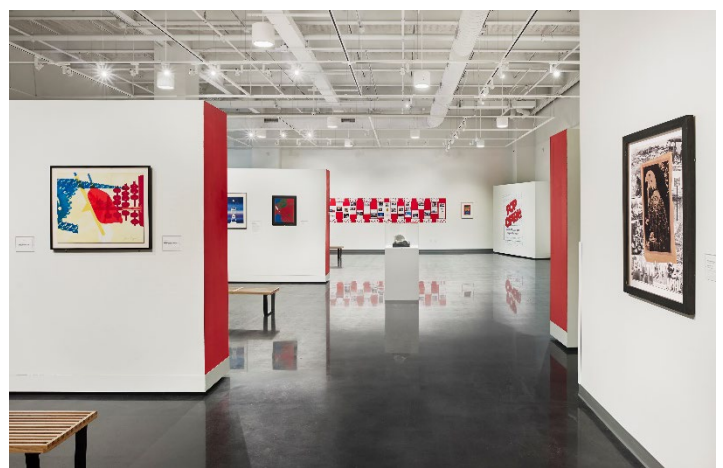
The Susquehanna Art Museum welcomes collaborative work with artists, curators, art historians, art educators, etc. As a non-collecting museum, all exhibitions at SAM are part of a planned program of rotating curated exhibitions and traveling shows. All exhibitions are curated to follow the education-focused mission of the museum, using the Exhibitions Policy. SAM accepts exhibition proposals throughout the year.

Lehr Gallery: Approximately 3,700 square feet, 300 linear wall hanging feet.



Features:

- Independent temperature/humidity controls
- Polished cement floor
- Exposed ceiling
- Moveable central walls
- Can be divided into smaller inner galleries



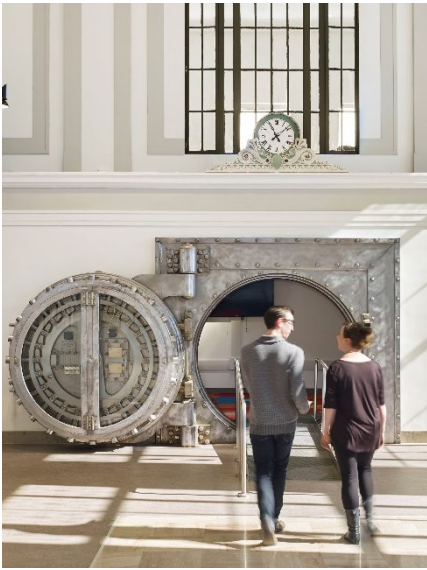
Lobby Gallery: Approximately 455 square feet, 114 linear wall hanging feet.

Features:

- Within the historic bank building
- Moveable walls
- 28' ceiling
- Visible to visitors upon entering the museum



Vault Gallery: Approximately 200 square feet, 34 linear wall hanging feet.



Features:

- Central historical bank building feature
- Large mounted display screen
- Steel walls – no holes can be drilled/nailed

As a result, the Vault Gallery is most appropriate for freestanding 3D work, unframed works on paper, and video/digital displays.

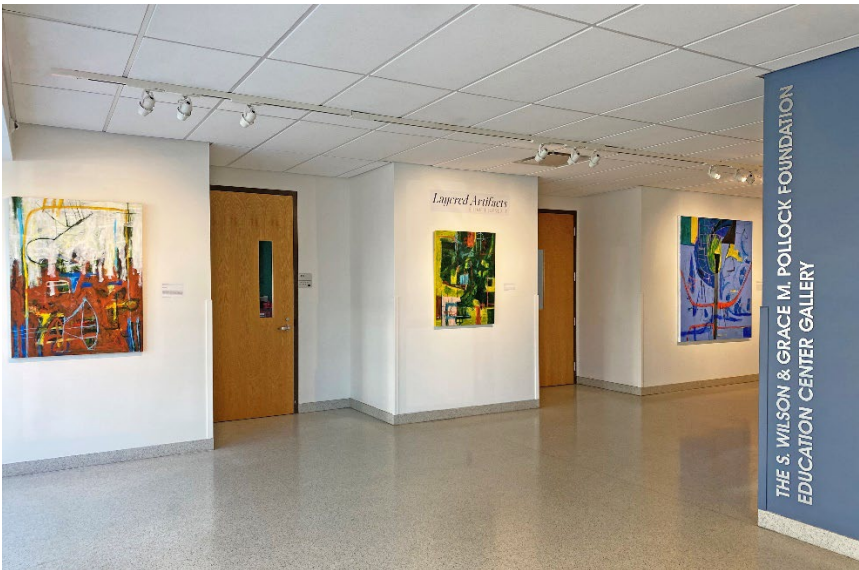


Pollock Foundation Education Center Gallery:

Approximately 500 square feet, 62 linear wall hanging feet.

Features:

- This space is a central passageway through the museum
- Adjacent to the classrooms
- Visible from the front museum windows



Project Space:

Approximately 155 square feet, 35 linear wall hanging feet.

Features:

- This space is flexible for small collections
- Accessible through the Lobby Gallery
- Visible from the front door of the museum

